

Sensordash

a platform for collecting and visualizing sensor data in the IoT

Andreas Hettenkofer, Philipp Gumann, Andreas Pabst
Supervisor: Prof. Dr. Jürgen Seitz

Advantages of Sensordash

- » Simplicity
- » Different kinds of visualisations
- » Connecting different kinds of devices
- » Storage of measurements

Functionality

Sensordash is a simple way of connecting all your LoRaWAN devices with one cloud platform and displaying their data in a magnificent way.

- » Register LoRaWAN device with the thethingsnetwork in an easy way
- » Display data in one dashboard in many different ways
- » Storage of sensor data
- » Compatibility with other projects
- » Sensor administration

Outlook

- » Open Source
- » User management for organisations
- » Sharing dashboards with others
- » Expand diagram types

Live demo

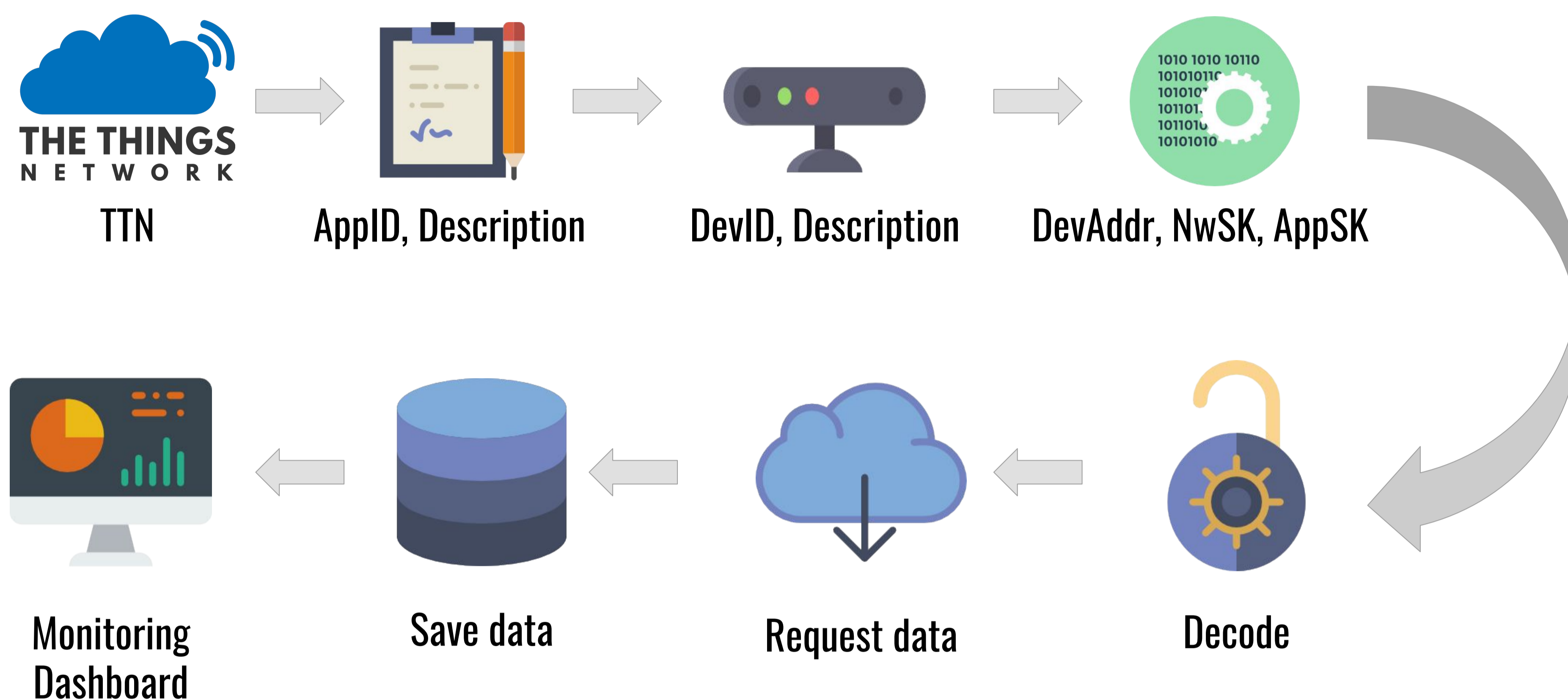
- » sensordash.projekt.dhbw-heidenheim.de



Sources

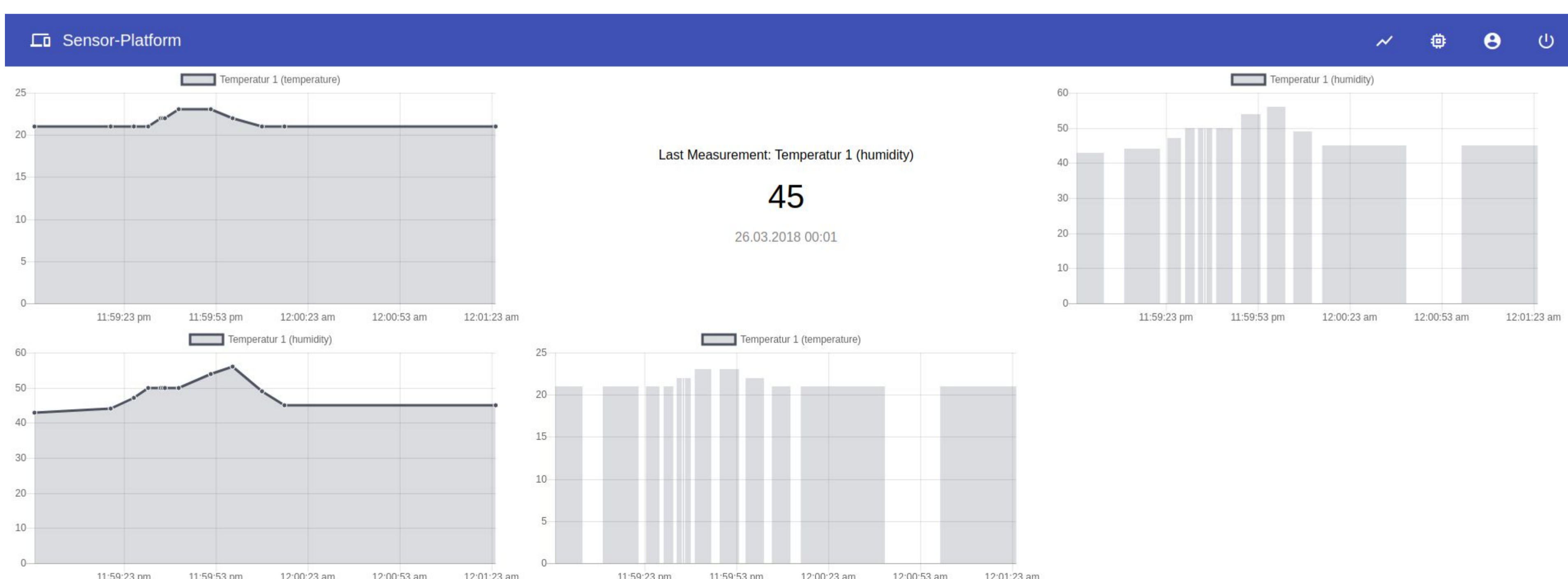
- <https://thethingsnetwork.org>
- <https://flaticon.com>

Previous Process



- » Multi-step process
- » Hard to use for non-technical users
- » Obstacle preventing the usage and therefore the spread of IoT-Applications

With Sensordash



Contact

Cooperative State University Baden-Württemberg Heidenheim
Marienstrasse 20, 89518 Heidenheim
+49 7321 2722-291
seitz@dhbw-heidenheim.de